

Output 3.3: Enhancing tree seed and seedling supply to provide diverse and climate adapted species and varieties within the framework of TREPA 2022 - 2027

CLIMATE CHANGE ANALYSIS WITH BIAS - CORRECTED GLOBAL CLIMATE MODEL DATA

Additional analysis with historical and future projections of MPI-ESM-LR and weather station data from Eastern Province

Roeland Kindt, dr. ir. - Senior ecologist, [Google Scholar profile](#)

This report provides figures and tabular results that include Standardized Precipitation Evapotranspiration Indices and Moisture Indices focused on the Eastern Province of Rwanda. All data and software used are open access, except for historical weather station data made available by the Rwanda Meteorology Agency.

May 2021

1. Project area

The project area consists of seven districts in the eastern province of Rwanda (figure 1.1)

Figure 1.1 Focal districts for the project have been labelled in this map. Administrative boundaries from the GADM database (www.gadm.org version 3.6; downloaded DEC-18). Boundary of Akagera National Park (green) obtained from World Database on Protected Areas (<https://www.protectedplanet.net/802> version 1.4; downloaded DEC-18) Map prepared in QGIS with OpenLayers plugin.

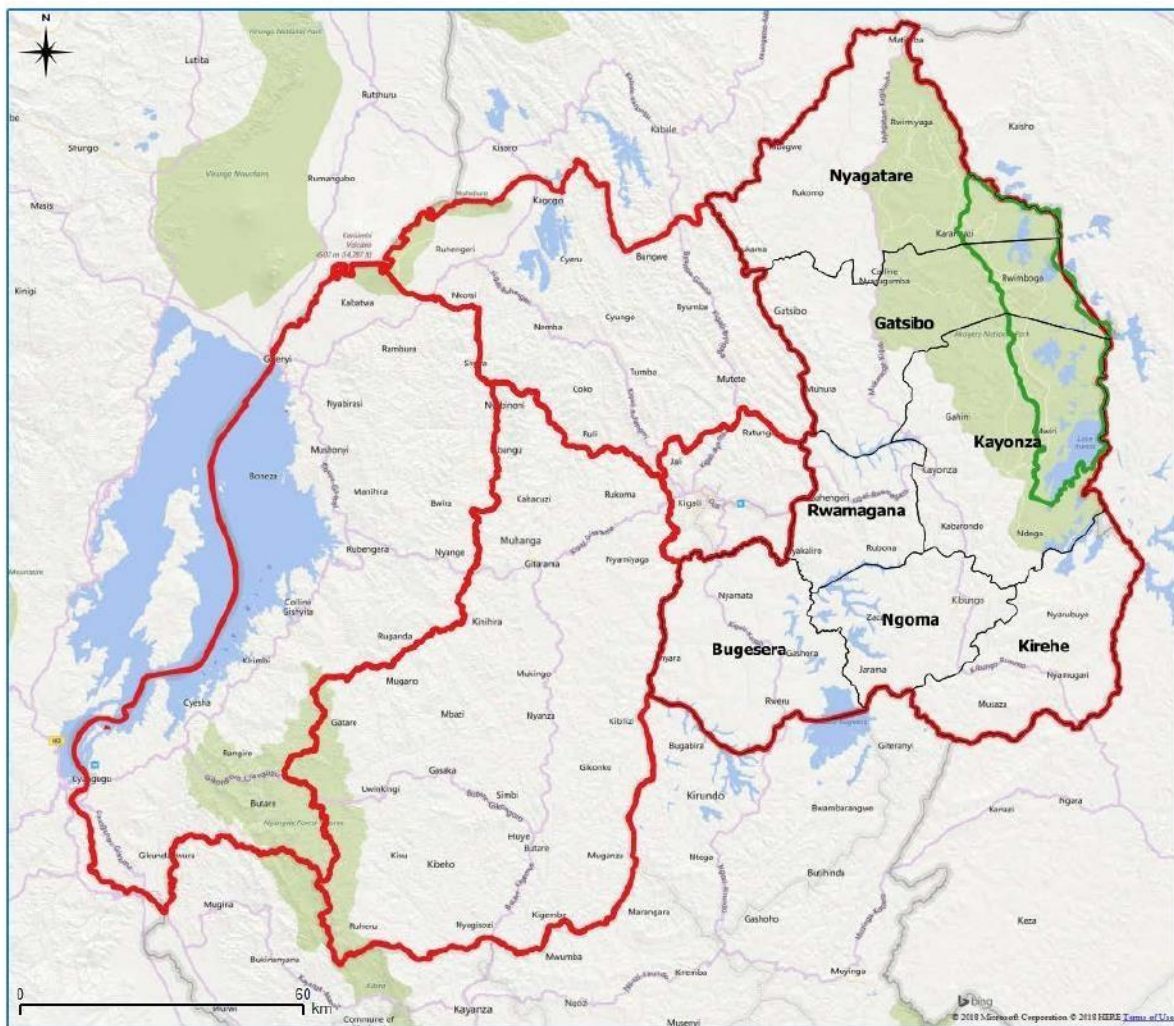


Figure 1.3 Focal districts for the project have been labelled in this map via red dots. Blue crosses indicate the locations of weather stations from which historical climate data was made available by the Rwanda Meteorology Agency. Administrative boundaries from the GADM database (www.gadm.org version 3.6; downloaded DEC-18) Map prepared in QGIS with OpenLayers plugin, using the ESRI National Geographic map background instead of Bing as in Figure 1.1.

